

MailMarshal™ SMTP 2006

MailMarshal SMTP is a total email security solution for business networks: combining anti-spam, anti-virus and content security into a highly scalable and easily manageable solution. MailMarshal SMTP enables you to apply policies for security, compliance and acceptable use to email at your corporate gateway – providing a safe and efficient working environment.

SECURE

Email presents a serious challenge for many organizations – it is essential for doing business but provides a vulnerable entry point for a range of security threats such as spam, phishing, viruses, spyware and hacking. MailMarshal offers a wide spectrum of security features including:

- Anti-spam and anti-phishing
- Anti-virus and anti-spyware
- Directory Harvesting Attack (DHA), relaying and Denial of Service (DOS) security

MailMarshal is not only thorough; it is fast – breaking an email down into its component elements to perform deep virus scanning and content security checks. Completely customizable, MailMarshal can apply essentially any security or quarantine procedures that you require – including end-user management of personal anti-spam settings.

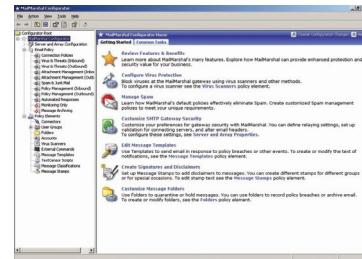
PROTECT

Corporate email is not only vulnerable to external security threats but can be prone to misuse from within. Maintaining confidentiality, blocking profanity or pornographic content, monitoring harassment and ensuring appropriate use of bandwidth are all important issues for executive managers

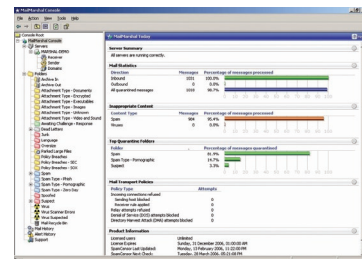
and system administrators. These issues are often addressed within organizations via Acceptable Use Policies (AUP).

MailMarshal is able to monitor and enforce any AUP, enabling you to protect your users from inappropriate content and your business from abuse, embarrassment and legal liability. MailMarshal provides you with powerful, granular control over all aspects of email use:

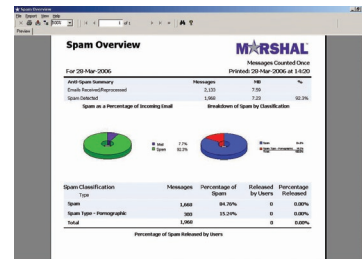
- Text – control messages and attachments containing profanity, confidential information, harassing/racist comments or inappropriate jokes.
- Attachments – control the sending and receiving of attachments by file type, file size, number of attachments, text content or who the sender or recipient is. You can even strip attachments from emails that may be suspicious for any reason, allowing the recipient to receive the body of the email.
- Size – reject messages that exceed your maximum message size limit before the message is even sent to your email gateway. MailMarshal can also reject messages based on the sender's email address, IP address or if the sender's email server does not conform to industry standard security practices.
- Users – manage users simply and easily. MailMarshal can import email



MailMarshal's Configurator makes it easy to define and manage your policies



Monitor the health of your email network and manage messages within the MailMarshal Console



A variety of built-in reports provide you with a clear understanding of your email environment

"With MailMarshal SMTP, we have a flexible solution that has enabled us to effectively block more than 4,000 spam messages a day"

SCOTT GASCH, THE CONTAINER STORE, USA

MARSHAL
Secure. Protect. Comply.

"I don't have to manage Marshal. I set it and forget it. The Marshal tools are phenomenal"

PAUL GRULKE, AGG, USA

accounts directly from Active Directory, Novell Directory Services and LDAP and can apply policies to individuals, groups or all users. You can set up custom policies that apply different rules and privileges to different groups of users. Groups can be by department, city, country, security level or any other criteria you require. You can quickly and effortlessly drag-and-drop users between groups to change a user's email privileges.

COMPLY

Organizations around the world are increasingly being governed by industry regulations and legal compliance. Sarbanes-Oxley, Gramm-Leach-Bliley and the HIPAA Act are recent examples where authorities are placing responsibility for compliance on businesses.

Compliance with these standards has various meanings but typically requires archiving and retaining email for a minimum period. Depending on the industry concerned there are often rules and standards for protecting confidentiality, maintaining information privacy, levels of disclosure and auditing.

MailMarshal provides a range of solutions to meet a broad set of compliance requirements:

- Archiving – automatically record all incoming and outgoing email and set minimum retention periods. Archives are searchable and auditable.

- Encryption – ensure privacy of message content such as customer contact information, healthcare records, credit history and finances.

- Confidentiality – manage confidential content such as legal documents, product designs, roadmaps, non-disclosure agreements and contracts.

- Disclaimers – automatically stamp all outgoing messages with your organization's legal disclaimer

- Reporting – report on all aspects of email use. From who you have been sending email to or from, through to what attachments or content has been sent, MailMarshal can allow you to analyze and understand how you are meeting any compliance obligations you may have.

TOTAL SOLUTION

MailMarshal not only helps you secure, protect and comply with email but makes email a convenient and efficient business tool again:

- Automatic Email Replies – configure MailMarshal to automatically detect and respond to common email enquires such as requests for pricing or frequently asked questions.

- Message Parking – set MailMarshal to detect large outgoing messages or mass-mailings that can be parked for delivery out of office hours, preserving network speed and bandwidth when you need it most.

- Scheduling – organize MailMarshal to perform automatic tasks based on time. Set message stamps that automatically expire at the end of a promotion or after major events. Preset policies that automatically activate in time with new staff arriving or departing.

MailMarshal is a total solution for everything email.

SYSTEM REQUIREMENTS

HARDWARE

- Processor - Pentium 4
- Disk Space - 10GB HDD (NTFS) or higher
- Memory - 512MB RAM or higher

SOFTWARE

- Operating System - Windows 2000/XP/2003
- Database – MSDE 2000 SP3a or later, SQL 2005 Express, Microsoft SQL Server 2000 SP3a or later, or SQL Server 2005
- Optional – Internet Information Services (IIS) 5.0 or later for Web Tools
- ASP .NET 1.1. ASP .NET is part of the .NET Framework 1.1



Marshal's Worldwide and EMEA HQ
Marshal Limited,
Renaissance 2200,
Basing View,
Basingstoke,
Hampshire RG21 4EQ
United Kingdom

Phone: +44 (0) 1256 848080
Fax: +44 (0) 1256 848060

Email: emea.sales@marshal.com

Americas
Marshal, Inc.
5909 Peachtree-Dunwoody Rd
Suite 770
Atlanta
GA 30328
USA

Phone: +1 404-564-5800
Fax: +1 404-564-5801

Email: americas.sales@marshal.com
info@marshal.com | www.marshal.com

Asia-Pacific
Marshal Software (NZ) Ltd
Suite 1, Level 1, Building C
Millennium Centre
600 Great South Road
Greenlane, Auckland
New Zealand

Phone: +64 9 984 5700
Fax: +64 9 984 5720

Email: apac.sales@marshal.com