

EXINDA 4700

Superior flexibility and scalability, the fully-featured Exinda 4700 provides sustainable, enhancement of critical business applications for mid to large enterprise.



At A Glance

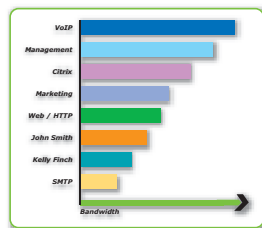
- Supports dual Internet / WAN links
- Scalable architecture - 2 Mbps to 100 Mbps
- Headquarters / Large Branch Office
- Slim 1U rackmount appliance
- Easily installed & network transparent
- Realtime application classification
- Advanced monitoring & comprehensive reporting
- Complete layer 7 optimization
- Adaptive compression

Product Brief

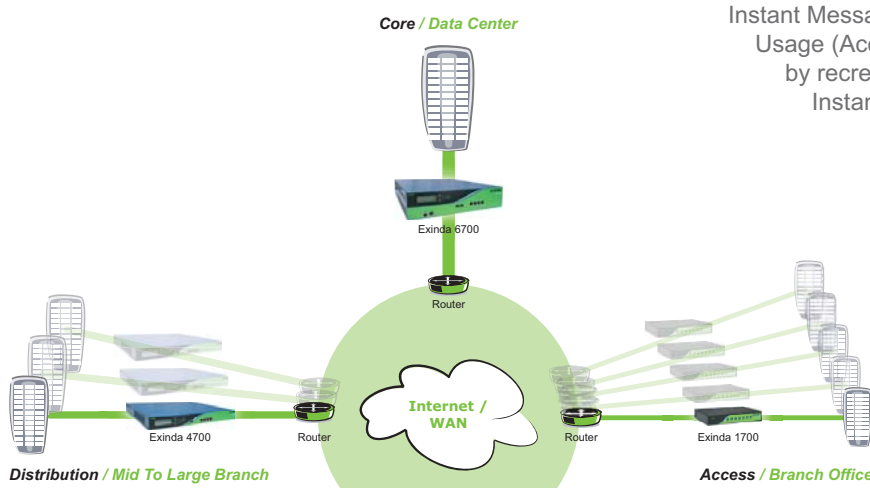
The Exinda 4700 delivers superior scalability and flexibility at the Distribution Layer for web enabled Enterprise.

Managers can now scale their optimization requirements inline with the network and bandwidth needs of the Headquarters. Providing all features in the 2Mbps model, the Exinda 4700 scales to support links up to 100 Mbps.

Leveraging Exinda's complete family of appliances, it is now possible to ensure flexible business service continuity across the corporate WAN.



Typical Deployment



Benefits

- Instant IP Wide Area Network visibility
- Improve application performance
- Manage recreational applications
- Deliver network accountability
- Proactively ensure network service continuity
- Reveal bandwidth shortfalls

Enhanced IP Networks

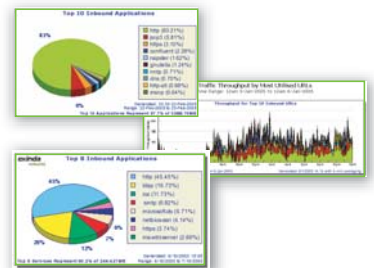
INCREASE WAN PERFORMANCE The Exinda 4700 is a fully featured layer 7 network optimization solution designed to support Internet / WAN links up to 100 Mbps.

REALTIME NETWORK AWARENESS Leveraging Exinda's layer 7 classification you will discover:

- Critical, essential and recreational applications traversing your WAN.
- How application contention is affecting performance of critical business services
- Performance bottlenecks at the group and user levels across the WAN.

HASSLE FREE ACCOUNTABILITY Review WAN application performance statistics easily online via secure web-enabled access and export to CSV for external auditing. Create and deliver comprehensive custom reports to management via PDF easily and effectively.

ENSURE BUSINESS SERVICE CONTINUITY Guarantee performance of critical business services such as VoIP, ERP and CRM. Manage essential business services such as Email, File & Print, FTP & Web traffic.



MANAGE RECREATIONAL APPLICATIONS Right size all non-essential network traffic such as Peer To Peer, Instant Messaging & Internet

Usage (Access & Downloads). Control malicious traffic produced by recreational applications such as Malware, Spyware, Instant Messaging and Peer to Peer.

DEMYSTIFY BANDWIDTH UPGRADES Discover exactly how much bandwidth is required for your Enterprise WAN. Maximize link efficiency and defer costly bandwidth upgrades. Dynamically scale available bandwidth to individual applications consistent with real world demands.

High Performance Layer 7 Classification Engine

Discover what is REALLY happening on your network.

Gain total layer 7 application clarity of your network. Dynamically measure application performance, user activity and end-to-end network quality. Detect applications regardless of port number such as P2P.

Classify & Control by

- Application Signature
- URL
- 802.1q, VLAN, MPLS
- Direction Source & Destination
- Protocol, Port, IP
- Citrix Priority Tag
- ToS, DSCP
- Custom Pattern

- Throughput & distribution by application, host, conversation & URL
- Realtime monitoring window
- Drill down to any conversation for up to 2 weeks

Flexible Layer 7 Optimization Engine

Match application performance with business demands.

Optimize and guarantee performance of realtime and business critical applications such as VoIP, ERP & CRM. Shape and block traffic down to the user level.

- Set min/max per application
- Guarantee Bandwidth
- Protect latency-sensitive applications
- Fair bandwidth allocation
- Control burst priority

Easy-To-Use Reporting Engine

Deliver relevant network statistics easily to management.

Leverage comprehensive online reporting features to discover applications and usage across your WAN Links. Output data via CSV or HTTP for external auditing. Alternatively, backend reporting into alternative ODBC / SQL, SNMP systems.

Advanced Compression Engine

Increase available bandwidth and accelerate applications.

Deploy adaptive packet compression transparently across your WAN. Scope and customize compression to suit individual applications. Leverage compression to increase available bandwidth and accelerate application delivery.

- Limit compression to compressible data
- Apply compression to selected applications
- Monitor compression effectiveness
- Allows for transparent deployment through firewalls

Technical Specifications

Model	4700-2	4700-15	4700-45	4700-100
Maximum throughput	2 Mbps	15 Mbps	45 Mbps	100 Mbps
Maximum concurrent flows	64,000	128,000	256,000	384,000
Maximum circuits	8	16	24	32
Maximum virtual circuits	128	256	512	768
Maximum policies	256	512	768	1024
SLA sites	70	150	200	300
Compression throughput**	2 Mbps	15 Mbps	45 Mbps	100 Mbps
High Availability***	with Network Expansion Module Installed			

* These figures refer to post compression throughput. ** NEM is factory installed.

Interfaces

Network Interfaces	2 x 10/100 Base-T (Bypass), 2 x 10/100/1000 Base-T
Network Expansion Module	2 x 10/100/1000 Base-T (High Availability)
Console Port	RS-232 - male DB-9 Connector

Management

Appliance Management	Web browser Interface (HTTPS), Front Panel LCD & Menu, SSH/telnet, Command Line Interface (CLI), SNMP MIB & event traps, RS-232 Console
----------------------	---

Reporting

PDF, CSV, ODBC / SQL, SNMP Exinda MIB, Exinda Adaptive Response Events & Actions

Dimensions

Width	424 mm / 16.8" (19 inch rackmount kit included)
Height	43.5 mm / 1.72"
Depth	380 mm / 11"
Weight	6.5 kg

Power & Environment

Power	DC Maximum Requirement 100W, 100/240 VAC, 50~60Hz
Environment Operating temperatures	0C to 40C, Storage temperatures – 20C to 80C, Relative humidity 0% to 90% (Non – condensing)

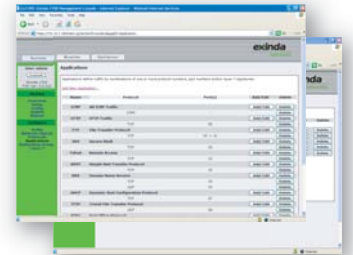
Approvals

CE, FCC Certified

Exinda Appliance Family



Designed for the Distribution Layer, the Exinda 4700 is complemented at the Core and Access Layers by the Exinda 6700 (100 Mbps to 500 Mbps) and Exinda 1700 (Up to 2 Mbps) appliances.



Exinda Networks

Americas

Suite 4200
701 Fifth Avenue
Seattle WA 98104
United States

Tel: +1 206 262 8145
Fax: +1 206 262 8001

APAC

Level 1, Unit 4
29 Cromwell Street
Collingwood, VIC 3066
Australia

Tel: +61 (0) 3 9415 8332
Fax: +61 (0) 3 9415 8337

EMEA

54 Clarendon Road
Watford, WD17 1DU
United Kingdom

Tel: +44 (0)1923 431661
Fax: +44 (0)1923 431861